



Provider Update

January 18, 2022

DOH Deputy Secretary Laura C. Parajón, M.D., M.P.H
Infectious Disease Bureau Chief Dan Burke
NW Regional Health Officer Miranda Durham, M.D.

NM DOH Mission

To ensure health equity, we work with our partners to promote health and well-being, and improve health outcomes for all people in New Mexico.

Goals



We expand equitable access to services for all New Mexicans



We ensure safety in New Mexico healthcare environments



We improve health status for all New Mexicans



We support each other by promoting an environment of mutual respect, trust, open communication, and needed resources for staff to serve New Mexicans and to grow and reach their professional goals

Recent Timeline

12.8.21	The F.D.A. authorizes AstraZeneca's <u>Evusheld</u> for emergency use
12.9.21	Pfizer boosters approved for 16 - 17 year olds
12.22.21	The F.D.A. authorizes Pfizer's Paxlovid for emergency use
12.23.21	The F.D.A. authorizes Merck's Molnupiravir for emergency use
1.3.22	The F.D.A. authorizes Pfizer vaccine boosters for everyone 12 and older and expanded 3rd dose for immune compromised individuals to include 5 - 11 year olds
1.3.22	The F.D.A changes booster dose time frame for Pfizer to "at least 5 months from primary series completion".
1.7.22	NM DOH recommends halting BAM/ETE and REGEN-COV due to high proportion of Omicron
1.7.22	The F.D.A changes booster dose time frame for Moderna to "at least 5 months from primary series completion".

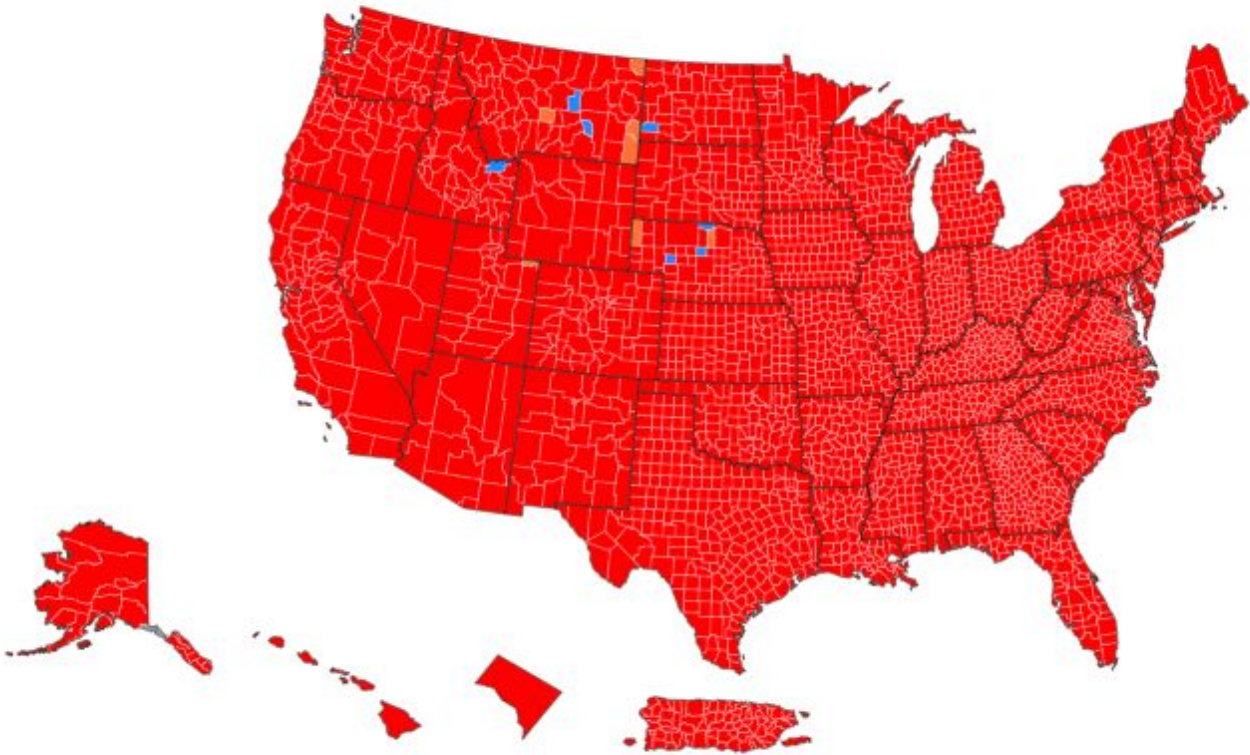
COVID-19 Overview

National COVID-19 Transmission Levels

Level of COVID-19
Transmission by US
County/Territory,
1/17/22

Community Transmission in US by County

	Total	Percent	% Change
High	3107	96.43%	11.08%
Substantial	54	1.68%	-7.08%
Moderate	27	0.84%	-3.2%
Low	31	0.96%	-0.78%



Cases

DAILY NEW CASES

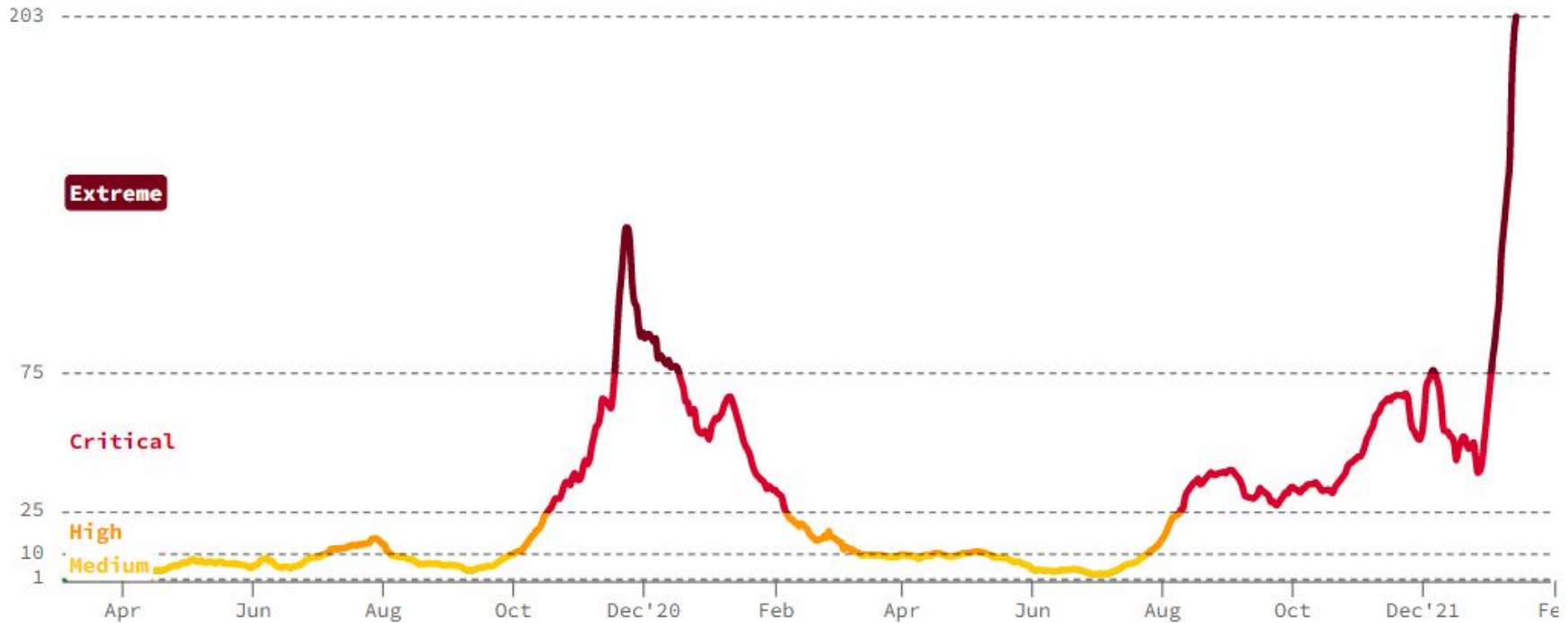
• **203.2** PER 100K

INFECTION RATE

• **1.45**

POSITIVE TEST RATE

• **22.8%**



Over the last week, New Mexico has averaged 4,261 new confirmed cases per day (203.2 for every 100,000 residents). [About this data](#)

[Share](#)

Cases

DAILY NEW CASES

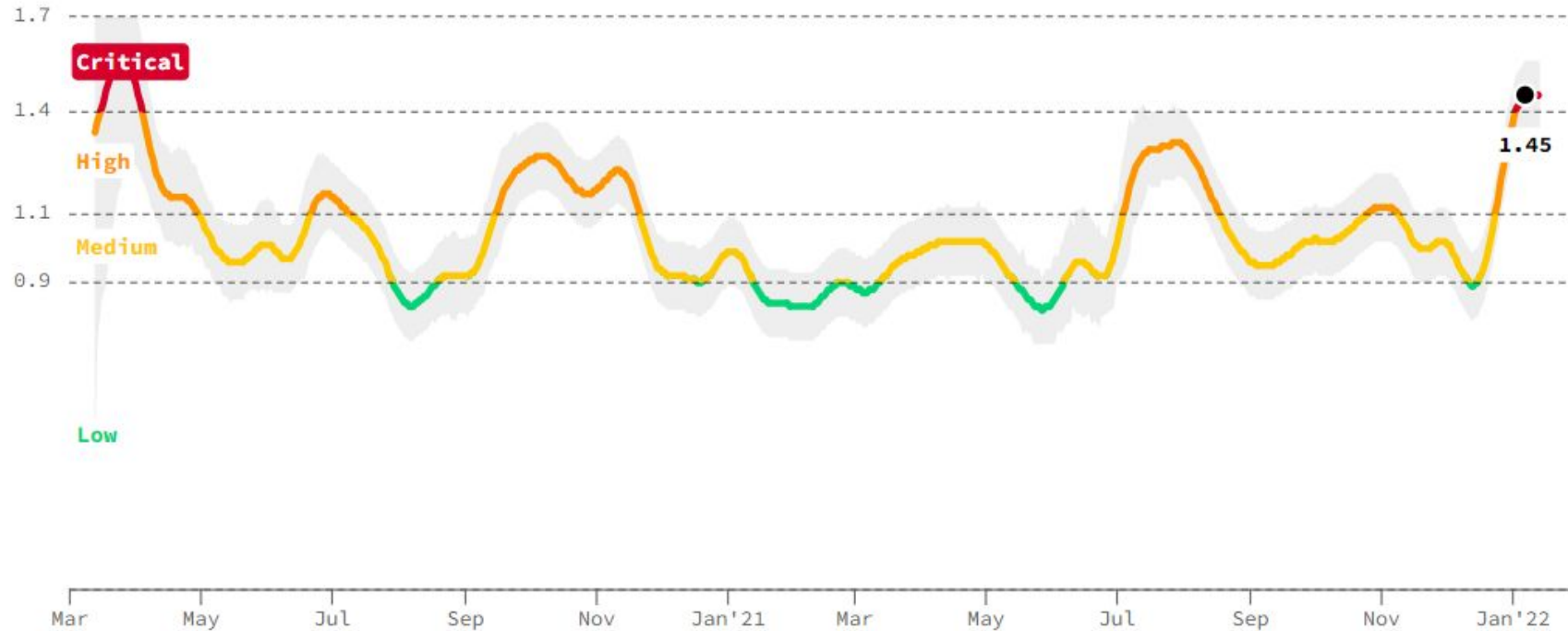
• **203.2** PER 100K

INFECTION RATE

• **1.45**

POSITIVE TEST RATE

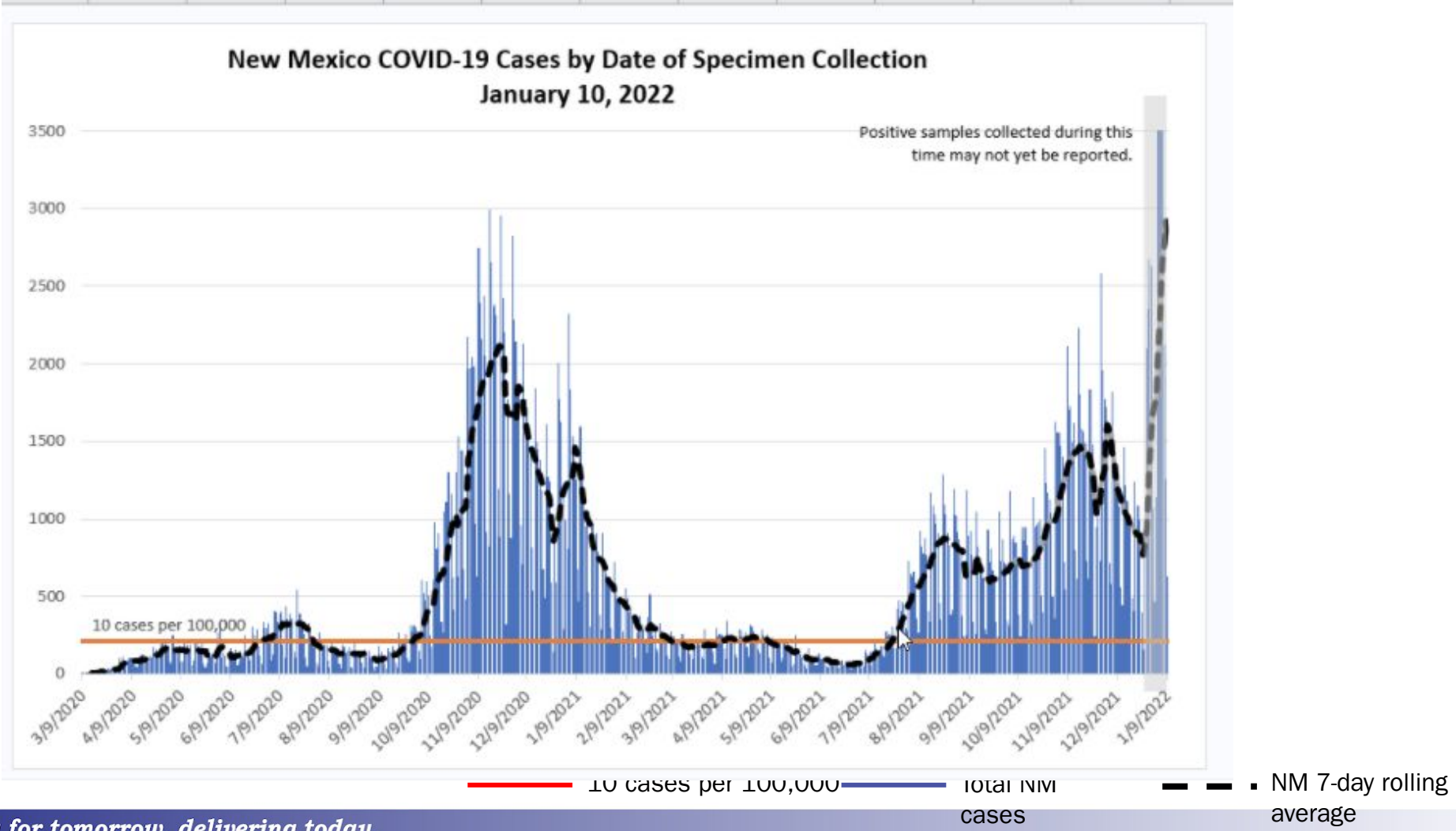
• **22.8%**



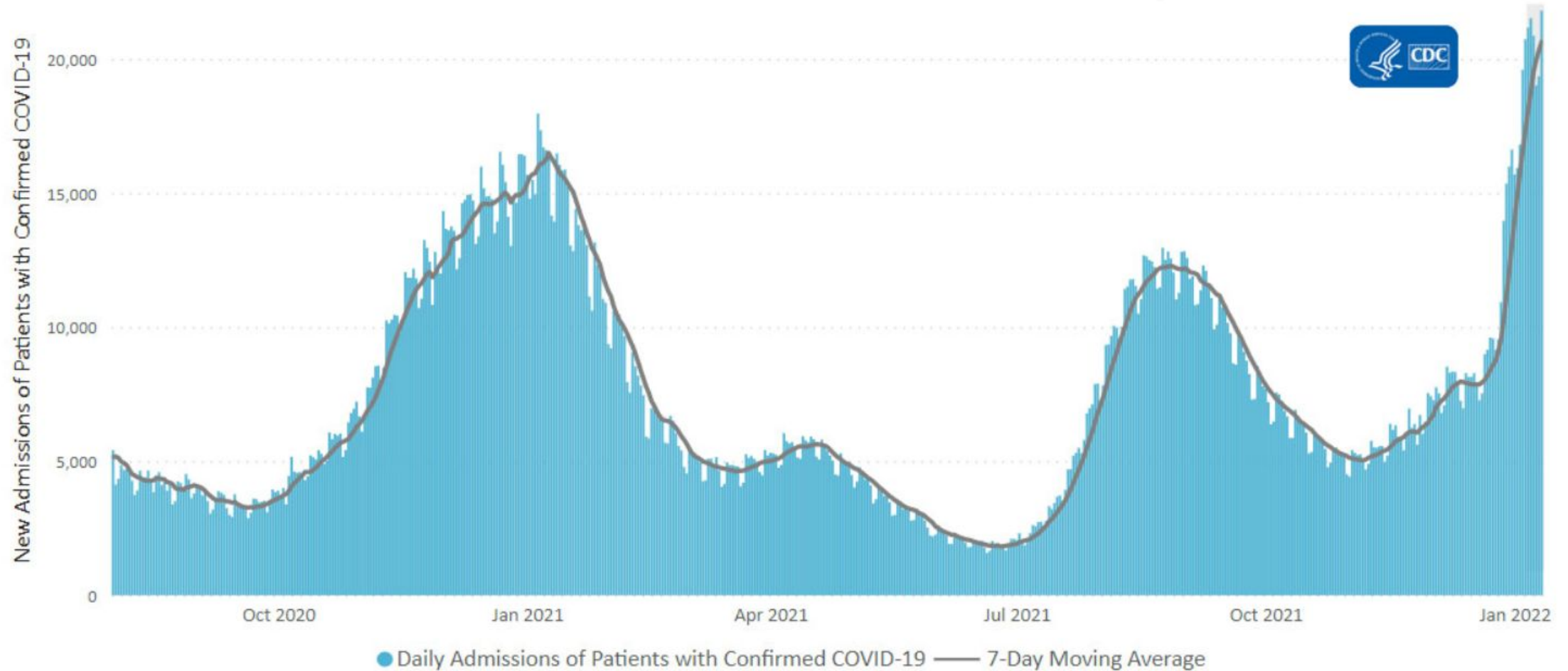
On average, each person in New Mexico with COVID is infecting 1.45 other people. As such, the total number of current cases in New Mexico is quickly growing. [About this data](#)

[Share](#) 

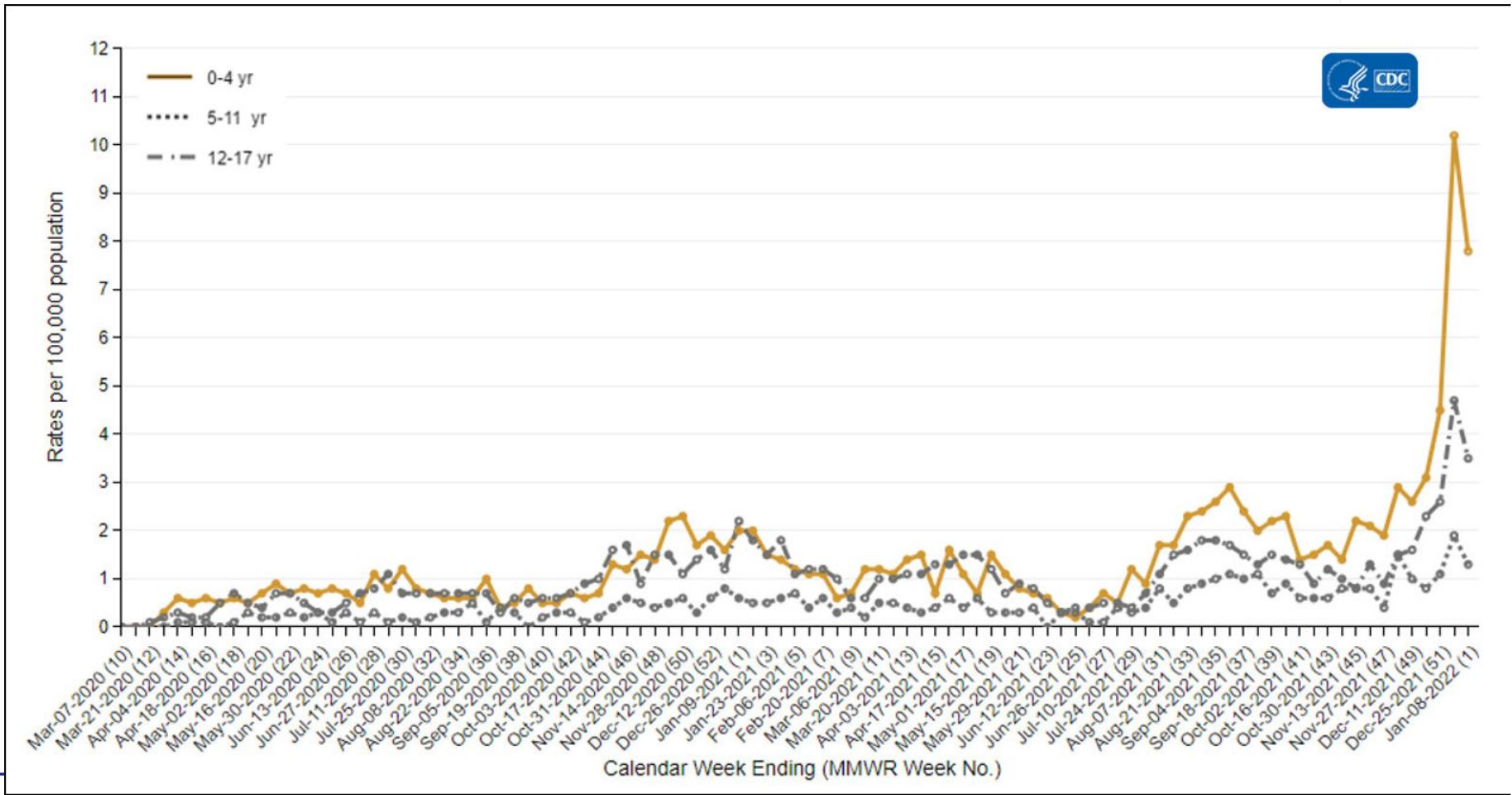
NM is Seeing a Steep Rise in COVID-19 Cases: Highest since beginning of Pandemic



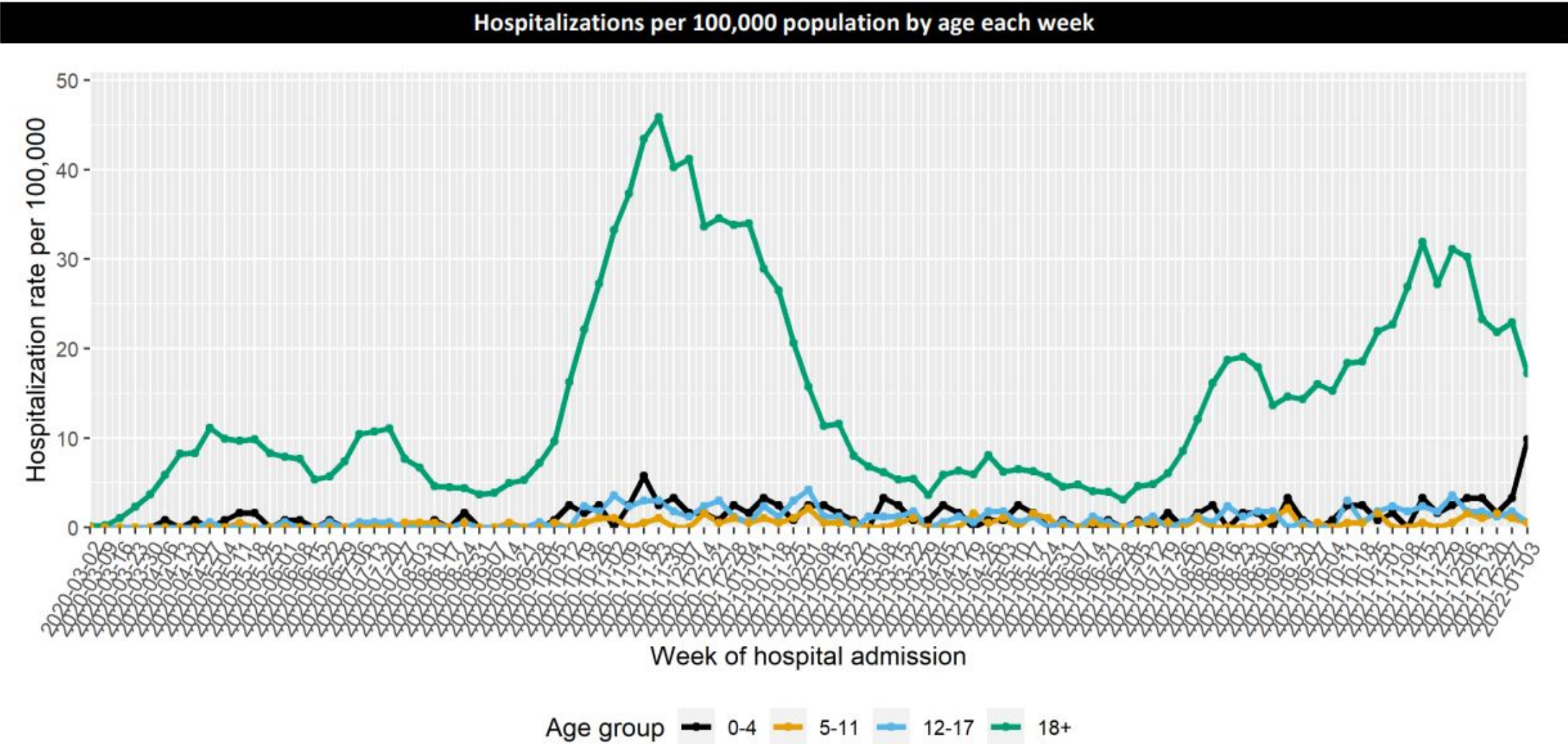
NATIONAL HOSPITAL ADMISSIONS



PEDIATRIC HOSPITALIZATIONS - NATIONAL DATA

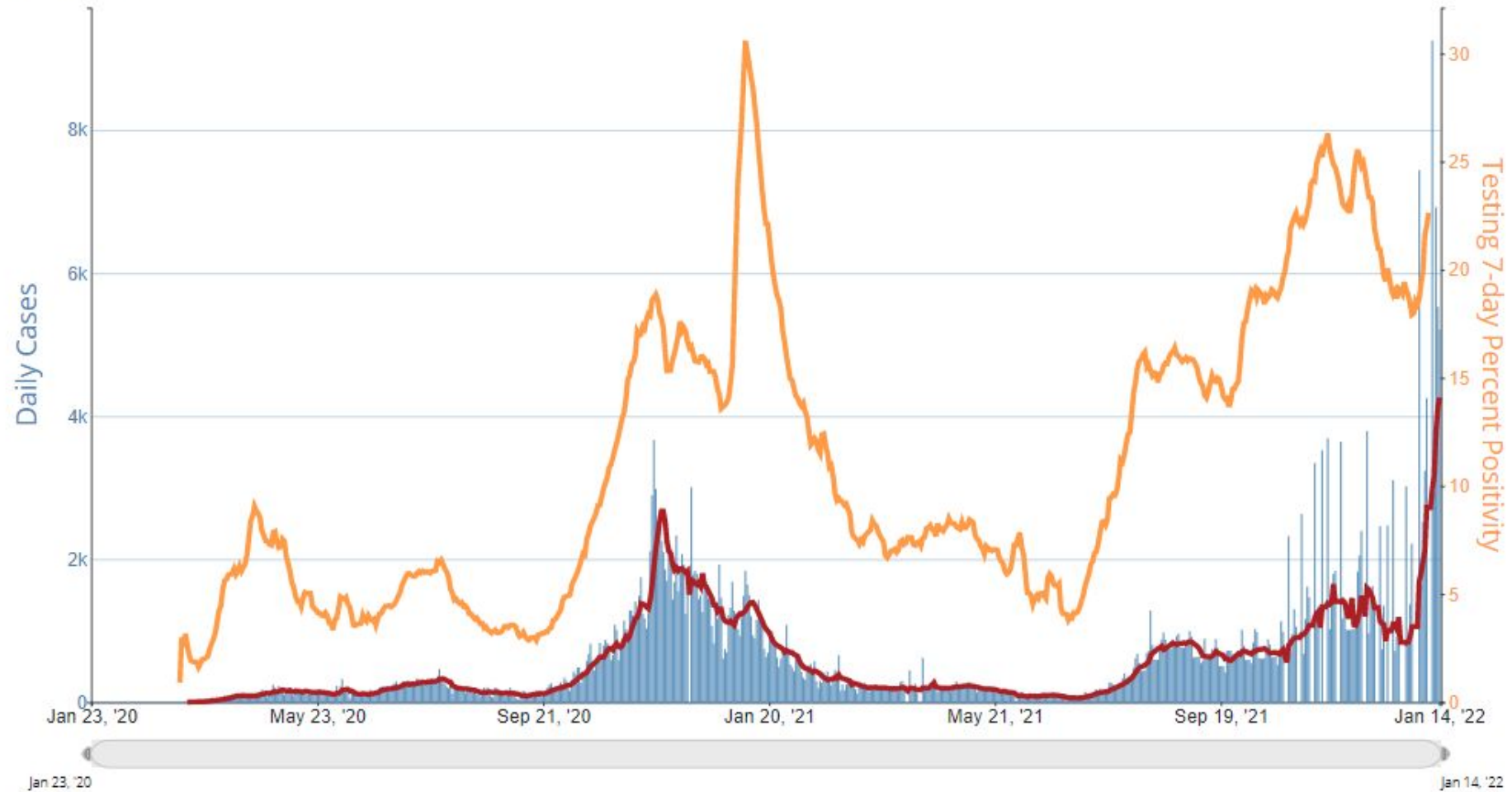


PEDIATRIC HOSPITALIZATIONS - NM DATA

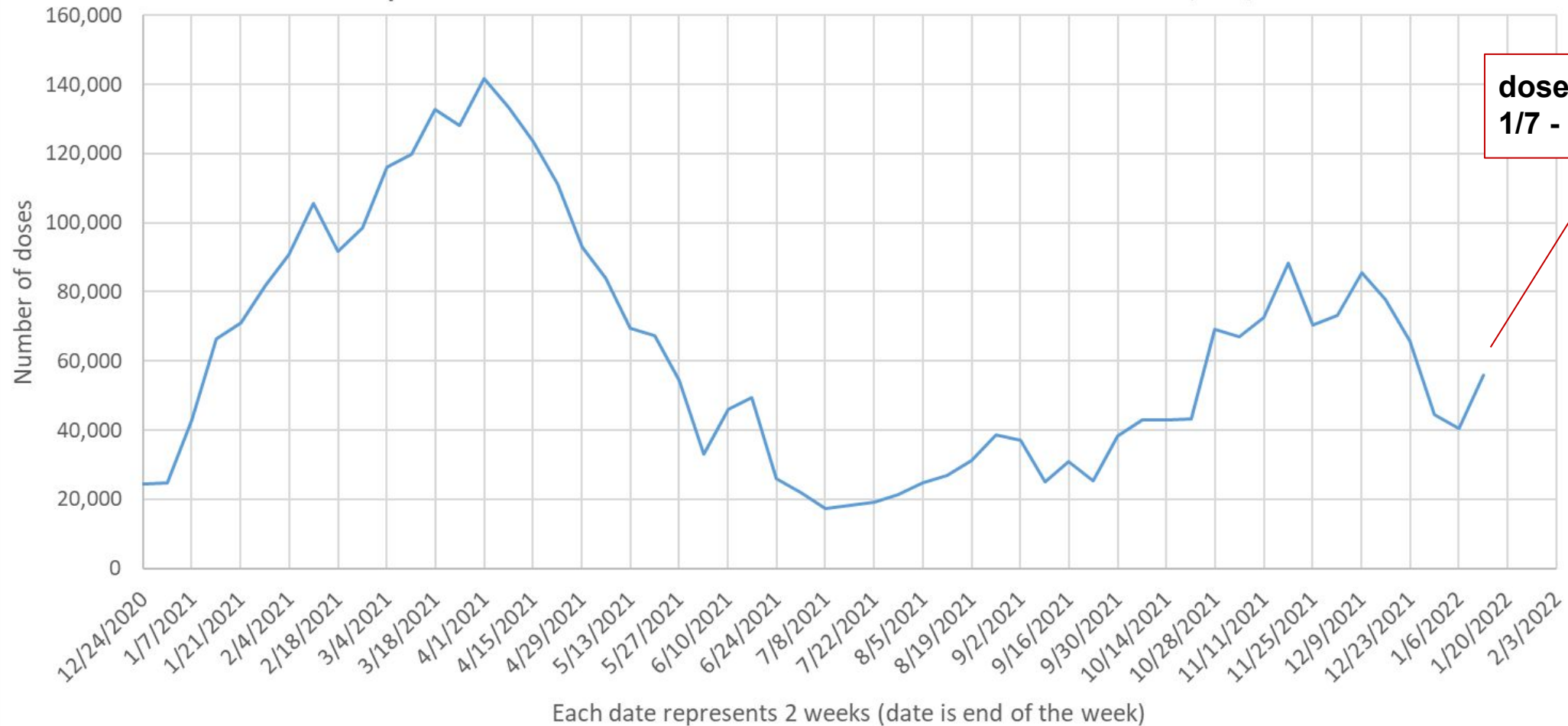


NEW MEXICO CASES and Percent Positivity

Daily Trends in Number of Cases and COVID-19 Nucleic Acid Amplification Tests (NAATs) 7-day Percent Positivity in New Mexico Reported to CDC



Weekly COVID-10 Vaccines Administered in NM since 12/24/20



NMDOH UPDATES

Updated policies: 5-day Isolation and Quarantine

2019 Novel Coronavirus Disease (COVID-19)

COVID-19 is a highly infectious and fast-spreading virus. Symptoms and their effects can range from mild to severe and in certain cases result in extreme health complications and death.



POLICIES FOR THE PREVENTION & CONTROL OF COVID-19 IN NEW MEXICO

EN ESPAÑOL

You've tested positive for COVID-19. Now what?

- Have you tested positive for COVID-19? [Click Here](#)
- Have you been in close contact with someone who has tested positive for COVID-19? [Click Here](#)
- Do you have COVID-19 Symptoms? [Click Here](#)

<https://cv.nmhealth.org/>

NM DOH UPDATES

POLICIES FOR THE PREVENTION AND CONTROL OF COVID-19 IN NEW MEXICO

January 13, 2022

Note: These policies are based on the best scientific information available as of the date above. Policies will be updated as new information becomes available.

Quarantine Periods for COVID-19

Quarantine if you have close contact with an infected person:

For Asymptomatic Close Contacts	Quarantine Period
1. Is boosted 2. Is fully vaccinated but not yet eligible for booster	No quarantine, wear a well-fitting mask around others for 10 days
3. Not yet fully vaccinated 4. Completed mRNA series >5 months ago or J&J >2 months ago 5. Not vaccinated	Quarantine for 5 days, then wear a mask around others an additional 5 days
6. Student/Staff in T2S 7. Student/Staff in K-12 school	Students and staff in T2S must community quarantine for 5 days, then wear a mask for an additional 5 days. If not in T2S, must fully quarantine for 5 days and wear a mask for an additional 5 days.
8. Resident in LTCF or assisted living facility 9. Hospital inpatient 10. NM Correctional Dept inmates	10 day quarantine required even if vaccinated
11. Resident other residential congregate care facility (i.e. shelter, jail, group home)	10 day quarantine recommended even if vaccinated
12. Health Care Workers	Interim Guidance for Managing Healthcare Personnel with SARS-CoV-2 Infection or Exposure to SARS-CoV-2 CDC

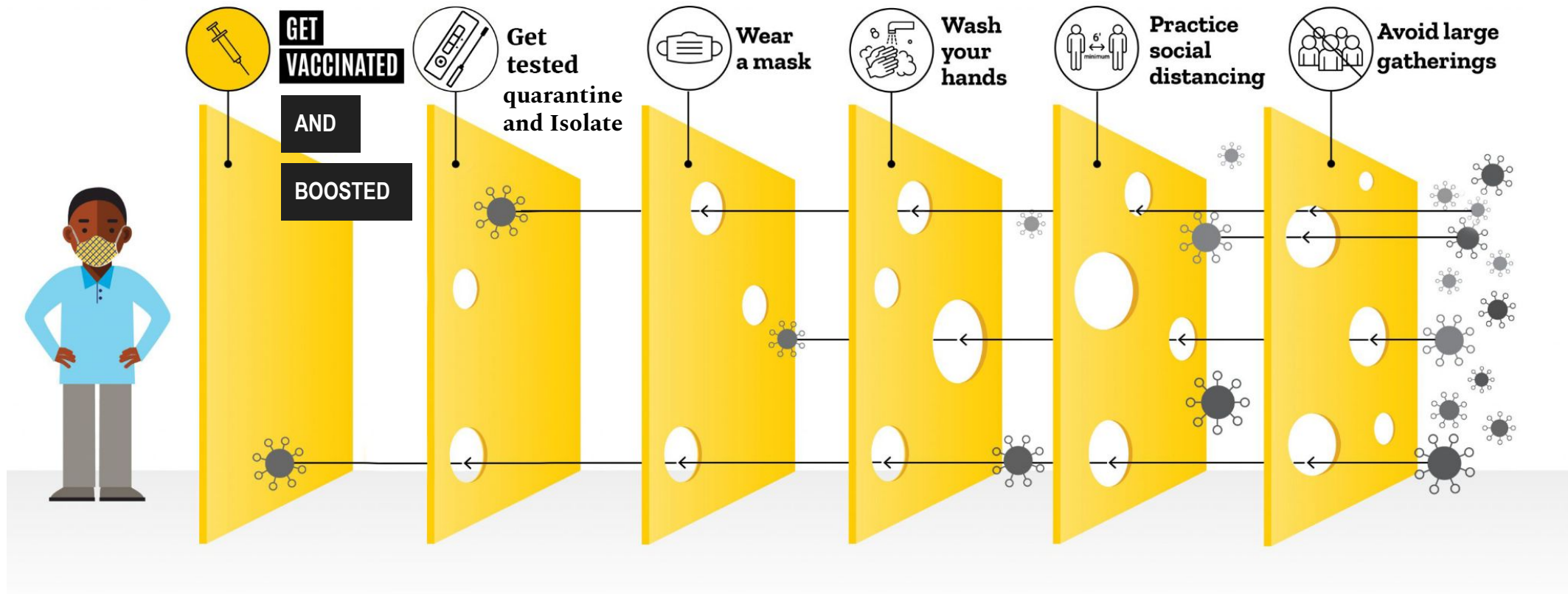
If you become symptomatic you must immediately isolate and get tested.

A negative COVID-19 test should not be used to end quarantine early.

[EPI-COVID19-Containment-Policies-1.13.2022.pdf \(nmhealth.org\)](#)

How to stop COVID-19:

The more layers you add, the safer you are



<https://myemail.constantcontact.com/COVID-19-Community-Newsletter-for-December-7--2021.html?soid=1121878134211&aid=vyTCjHSfOnM>

Vaccine Updates

Updates

- Boosters are now due for the first immune compromised people to get the additional primary dose (Aug 13)
- “Up to date” means getting all the doses that you are eligible for
- Children 12-15 years old are eligible for Pfizer booster at 5 months (including 4th dose of immune compromised)
- Moderna and Pfizer booster interval changed to 5 months from completion of primary series
- Immune compromised children ages 5 - 11 are now recommended to get the “third primary dose” 28 days from 2nd dose

<https://www.cdc.gov/coronavirus/2019-ncov/vaccines/stay-up-to-date.html>

Vaccines given outside the USA

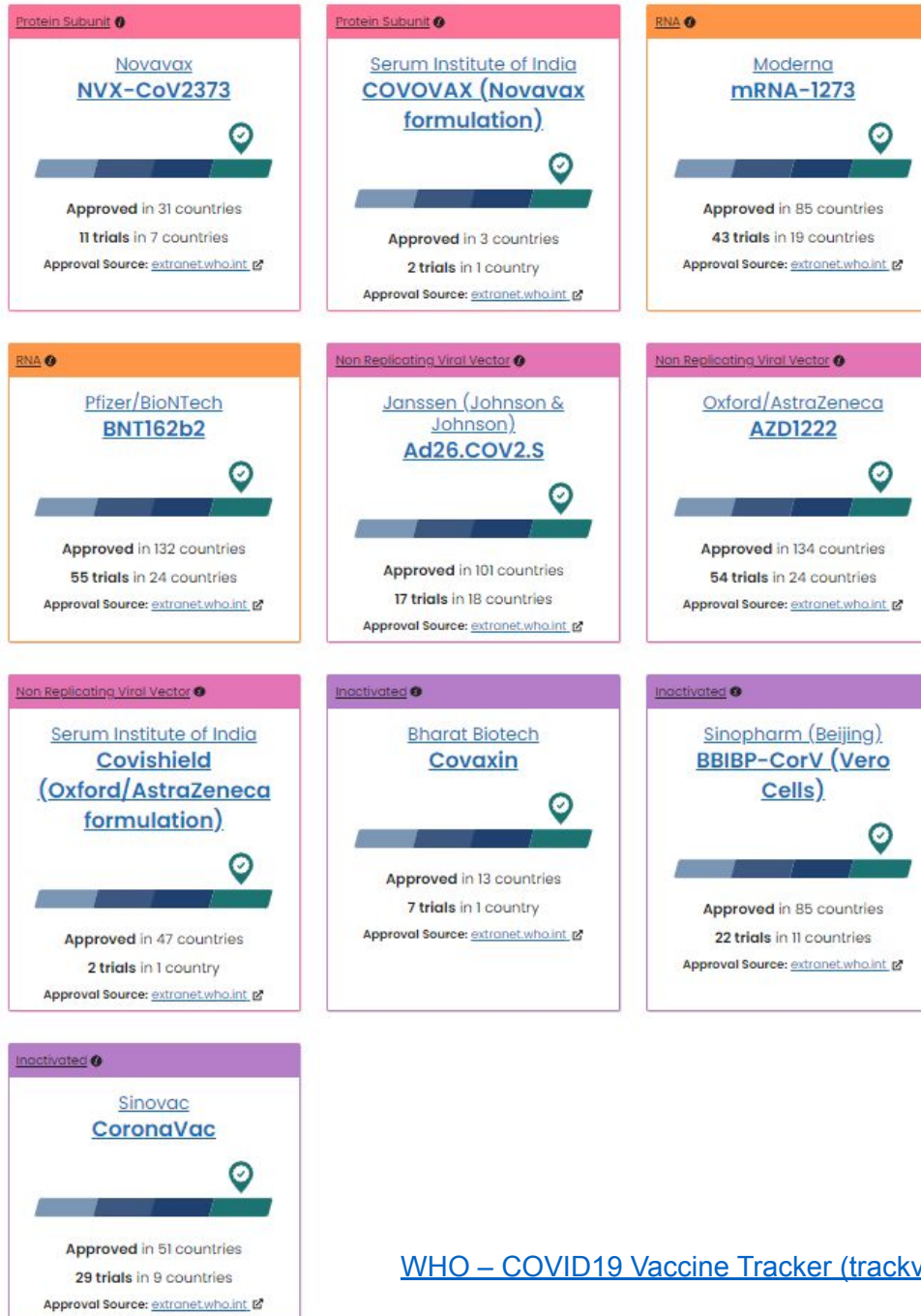
People who received one dose of a WHO approved (but not FDA-approved/authorized) COVID19 vaccine **do not need to restart** a primary vaccination series in the United States. The EUI provides a legal framework for heterologous use of Pfizer-BioNTech COVID-19 vaccine in individuals who received a non-FDA authorized or approved COVID-19 vaccine outside of US or as part of a clinical trial.

- They should receive a single dose of Pfizer-BioNTech COVID-19 vaccine at least 28 days since receipt of their first dose, after which they are considered [fully vaccinated](#).
- Moderately or severely immunocompromised people ages 12 years and older who received Pfizer-BioNTech COVID-19 Vaccine to complete the initial series should receive an additional primary dose of Pfizer-BioNTech COVID-19 Vaccine at least 28 days later, as detailed in [Considerations for COVID-19 vaccination in moderately or severely immunocompromised people](#).
- People ages 12 years and older (including moderately or severely immunocompromised people who received an additional primary dose), should also receive a single Pfizer-BioNTech COVID-19 Vaccine booster dose, at least 5 months after completing their primary series. See the [Booster dose section](#).

<https://www.cdc.gov/vaccines/covid-19/clinical-considerations/covid-19-vaccines-us.html>

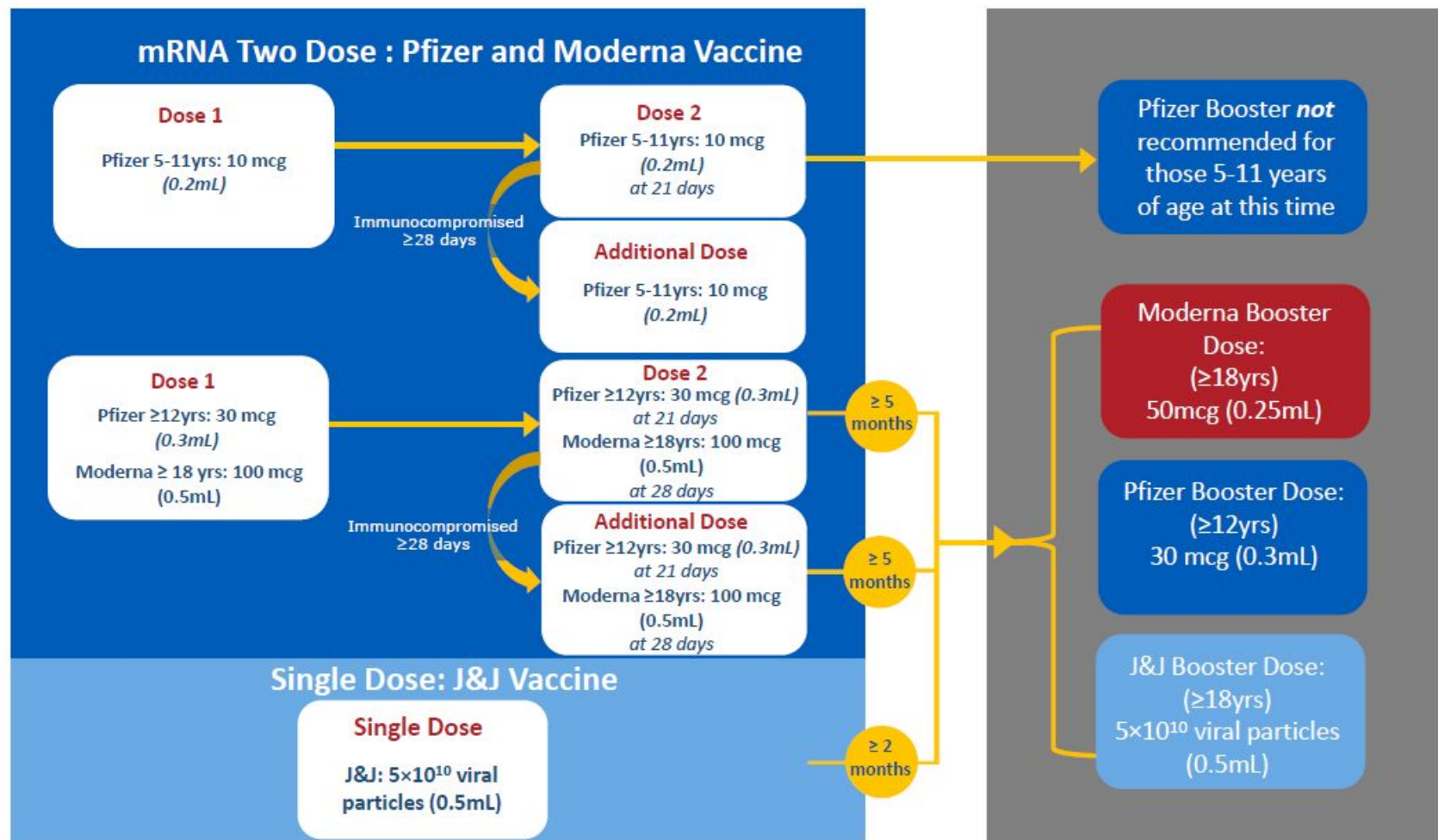
<https://www.cdc.gov/vaccines/covid-19/eui/downloads/EUI-HCP.pdf>

10 Vaccines Approved for Use by WHO



[WHO – COVID19 Vaccine Tracker \(trackvaccines.org\)](https://trackvaccines.org)

COVID-19 Vaccine Recommendations With Additional and Booster Doses



Updated January 7, 2022 Design courtesy of the Texas Department of State Health Services

See CDC Guidance for Updates and More Information

VACCINE PROGRAM REMINDERS

- Please submit temperature logs for units storing COVID-19 vaccine weekly.
- Digital data log readings should be uploaded into the New Mexico State Immunization Information System (NMSIIS).
- PDFs of written or Excel spreadsheet temperature logs should be submitted to coviddata.compliant@state.nm.us



REMINDERS, cont.

- Gray cap **CANNOT** go in the freezer (ULT or refrigerator only)
- The date printed on the Pfizer Pediatric (orange cap) and Adult/Adolescent (gray cap, 12+, no diluent) vaccine vials indicate the manufacture date and NOT the expiration date.
- Originally, the expiration date was 6 months from the manufacture date. **The expiration date for Pfizer orange and gray cap vaccine has now been extended to 9 months (while held at ULT frozen.)**
- The Fact Sheets for both orange and gray cap vials provided by the FDA now reads, “regardless of storage conditions, vaccines should not be used after 9 months from the date of manufacture printed on the vial and cartons”.
- Updated expiry dates for both the orange and gray cap vials are provided in the table.

Printed Manufacturing Date	9-Month Expiry Date*
06/2021	Feb. 28, 2022
07/2021	Mar. 31, 2022
08/2021	Apr. 30, 2022
09/2021	May 31, 2022
10/2021	Jun. 30, 2022
11/2021	July. 31, 2022
12/2021	Aug. 31, 2022
01/2022	Sept. 30, 2022
02/2022	Oct. 31, 2022

*Date of expiration always falls on the last day of the month

VACCINE QR CODES

https://nmsiis.health.state.nm.us/webiznet_nm_public/Application/PublicPortal

COVID-19 Vaccination Record

Please keep this record card, which includes medical information about the vaccines you have received.

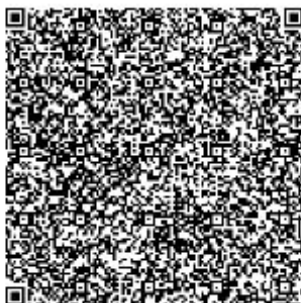
Por favor, guarde esta tarjeta de registro, que incluye información médica sobre las vacunas que ha recibido.



SIMPSON	BART	M	
Last Name	First Name	Middle Name	Generation
01/01/1999	2890971		
Date of birth	Patient number (medical record or IIS record number)		
Vaccine	Product Name / Manufacturer Lot Number	Date	Administering Clinic
1st Dose COVID-19	COVID-19 mRNA (MOD) 011B21A	08/01/2021	LAS ESTANCIAS CLINIC/SWA (SMALE5873)
2nd Dose COVID-19	COVID-19 mRNA (MOD) 021J11A	09/01/2021	LAS ESTANCIAS CLINIC/SWA (SMALE5873)



Digital COVID-19 Vaccination Record



- This SMART Health Card is a Digital COVID-19 Vaccination Record (<https://smarthealth.cards/>)
- Keep a copy or share this with a trusted organization by letting them scan the 2D barcode (QR code) on your paper or phone screen
- Downloaded/Printed on 1/11/2022 at 11:42:48AM
- You may not misuse, modify, alter, amend or remove any of the content on this card. Misuse of this card in any way is expressly prohibited and may constitute a criminal offense punishable by imprisonment.

SMART™ and the SMART logos are trademarks of The Children's Medical Center Corporation. Used with permission.

For assistance:

1. Contact our NMSIIS Help Desk at (833) 882-6454
2. Email us at COVID.vaccines@state.nm.us
3. Resource guide in the NMSIIS Reports section



Testing Updates

FEDERAL PROGRAM launching tomorrow



COVIDtests.gov

English

Español

Free at-home COVID-19 tests

Every home in the U.S. can soon order 4 free at-home COVID-19 tests. The tests will be completely free—there are no shipping costs and you don't need to enter a credit card number.

Ordering begins January 19.



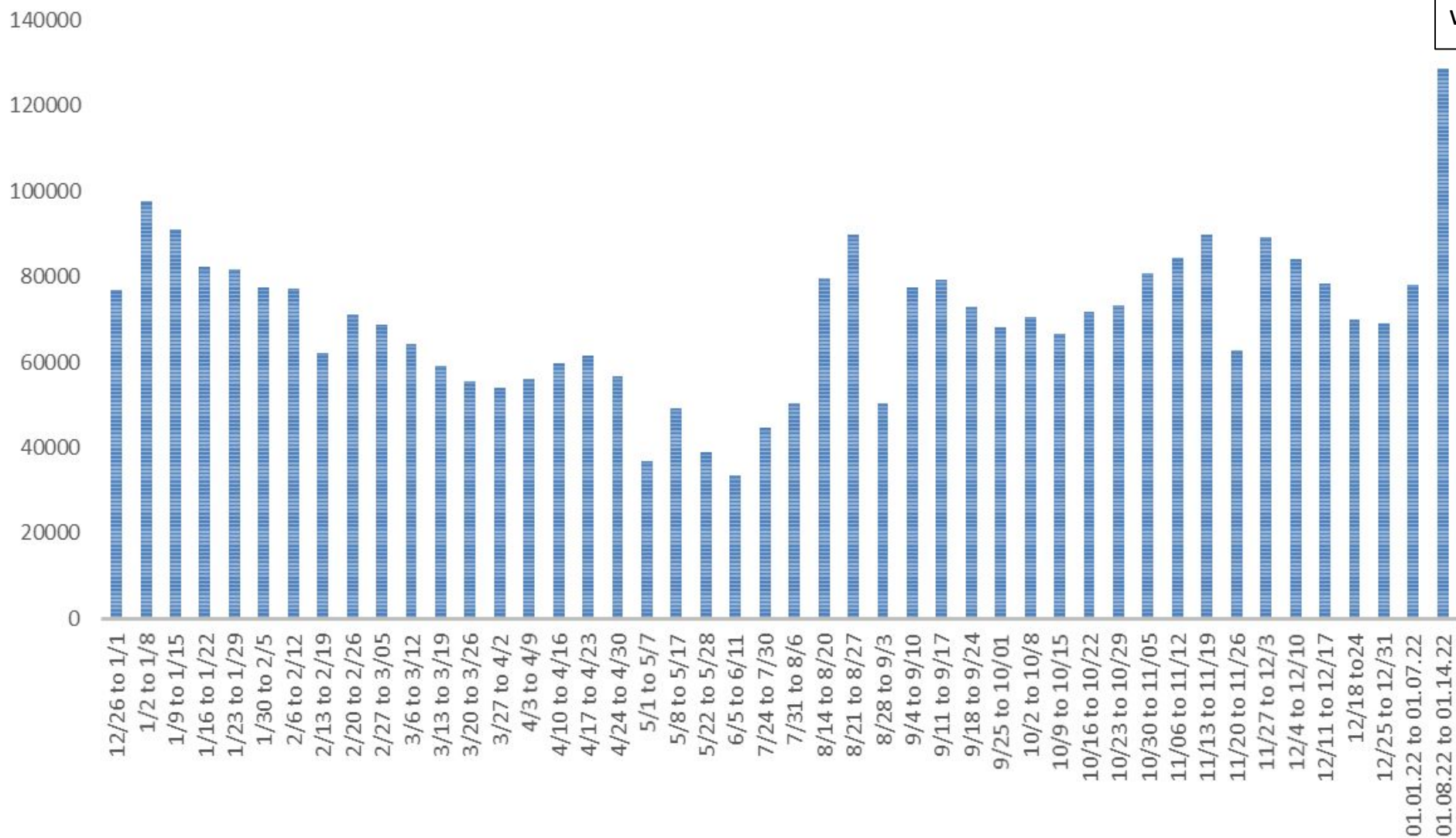
Investing for tomorrow, delivering today.

1190 S. St. Francis Drive • Santa Fe, NM 87505 • Phone: 505-827-2613 • Fax: 505-827-2530 • nmhealth.org

ICATT (Increasing Community Access To Testing) Program

- Program is run through CDC
- NM approved 1/16/22 for 4 sites.
- Contractor (eTrueNorth) to provide 4 surge testing sites.
- Start date projected: 1/22/22
- Sites: EXPO in ABQ; Santa Fe Fairgrounds; Lea County Event Center in Lovington; Las Cruces Public Schools Field of Dreams
- PCR testing
- Requires that NMDOH provide a few staff for traffic and registration

TOTAL TESTS RESULTED BY WEEK 2021- 2022



65% increase
from previous
week

Turn Around Times

7 Days: Turnaround Recent January 8, 2022 to January 14, 2022

Lab	Number of Labs	Mean Turnaround Time
Curative	35,863	2.01
LabCorp	7,297	3.23
Other Lab	38,319	1.66
Pathology Consultants of New Mexico	6,539	2.99
Quest Diagnostics	5,562	3.32
SJM_PMG_USA	8,999	3.66
SLD	6,456	1.63
Southwest Labs	389	0.82
TriCore	15,036	1.09
Vault Medical Services	4,394	2.96
Total	128,854	2.10

Home Testing Program

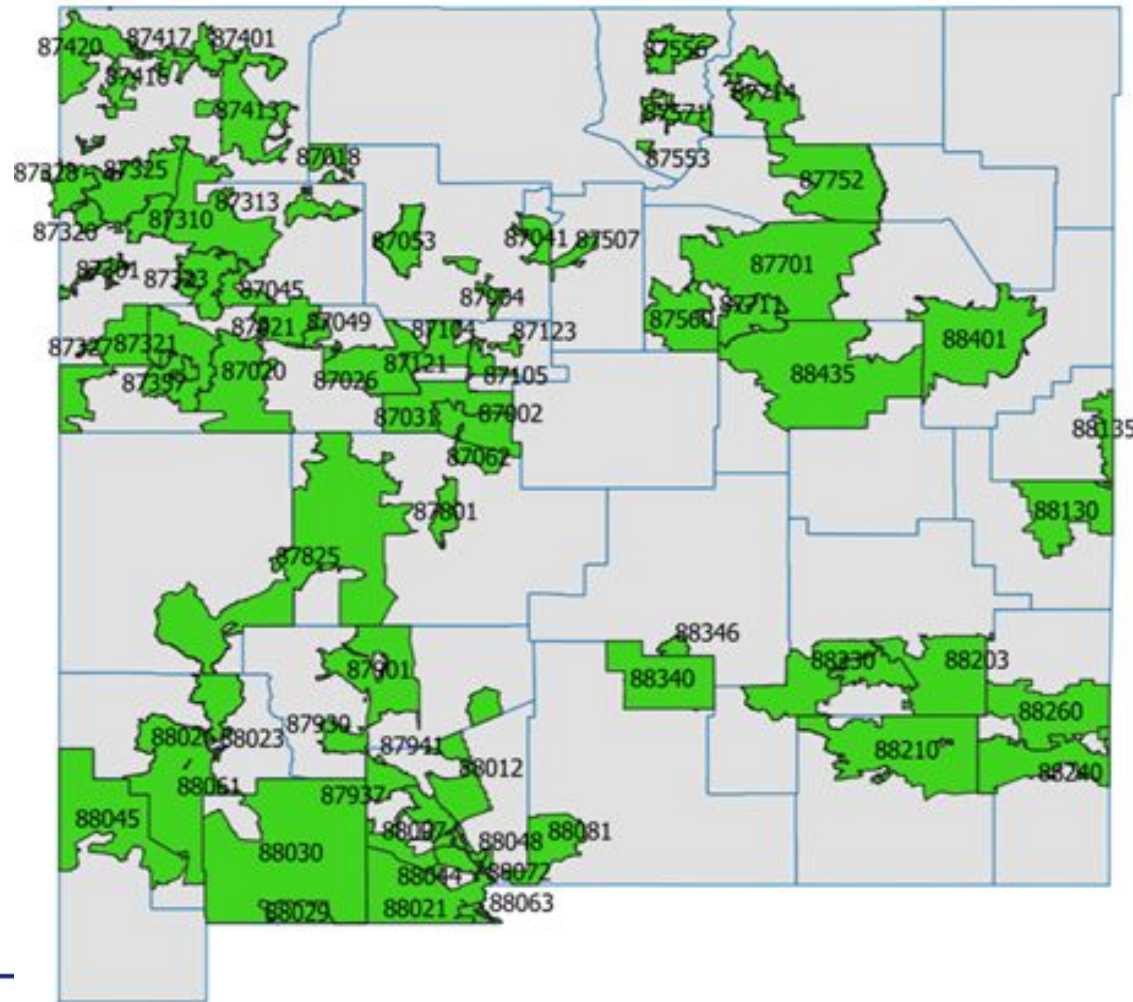
- First 200K tests went out Thursday 1/13 and Friday 1/14
- Meeting with EM's on Friday 1/14
- Next 200K tests arrived Monday 1/17

PLAN:

- Distribute to areas of high SVI (top 25% of ZCTAs)
- Factor in Rio Arriba (missing SVI data)
- Allocate 11% to tribes and pueblos
- Allocate pro-rata to designated ZCTAs with adjustment for high case counts
- County EMs to help with storage and distribution
- DHSEM/BHEM to organize transport
- Engage community partners in distribution
- Provide resources for education and follow up
- Home test page: [Self Test Overview | NMDOH - Coronavirus Updates \(nmhealth.org\)](#)



Home test plan - distribution



ZCTAs in the upper 25th percentile for SVI	
Total Counties	26
total ZCTAs	79
total zip codes	
total population	1,010,380

TARGET ZIP CODES: Highest Social Vulnerability Index (SVI) Zip Codes							
87002	87049	87310	87401	87701	88001	88044	88203
87004	87053	87312	87413	87711	88005	88045	88210
87007	87062	87313	87416	87714	88007	88047	88230
87018	87102	87320	87417	87752	88008	88048	88240
87020	87104	87321	87420	87801	88012	88061	88260
87021	87105	87323	87507	87825	88021	88063	88340
87026	87108	87325	87553	87901	88023	88072	88346
87031	87121	87327	87556	87930	88026	88081	88401
87041	87123	87328	87560	87937	88029	88130	88435
87045	87301	87357	87571	87941	88030	88135	

WHAT TO DO WITH YOUR COVID-19 AT-HOME TEST RESULT

Positive test result

Stay home for 5 days

(for both vaccinated and unvaccinated)



Stay at home in a room away from others in your household.



You **DO NOT** need to get an additional PCR test



If you have no symptoms after **5 DAYS**, you can leave your house **BUT** wear a mask for 5 more days.

If you have a fever, continue to stay home until your fever is gone for 24 hours



To prevent the spread of COVID, tell anyone you have recently had close contact with and encourage them to get tested, monitor for symptoms, and reduce exposure to other people.

Negative test result

Have Symptoms

(for both vaccinated and unvaccinated)



- Cough
- Fever/Chills
- Shortness of breath
- Muscle or body aches
- Vomiting, diarrhea
- New loss of taste or smell

If possible, Get a PCR test OR Repeat at-home test in 1-2 days

Stay at home until you know your test result.



If you test positive, follow the guidelines for a positive test result.



If you test negative again, no other test is needed at this time.

If you can't get a test, assume you are positive and stay home

No Symptoms

(depends on vaccination status; see below)

No other test is needed at this time, except:

If you had close contact with someone with COVID-19:



If you are up to date on all vaccine that you are eligible for*:

- Wear a mask around others for 10 DAYS
- Test on Day 5 if possible



If you are unvaccinated, not fully vaccinated or without a booster (not up to date)

- **Stay at home for 5 DAYS**
- Then wear a mask around others for 5 MORE DAYS
- Test on Day 5 if possible



If you develop symptoms, stay home and go to "HAVE SYMPTOMS" column



If you have any questions, please visit cv.nmhealth.org/selftest* or call the Coronavirus Hotline: 1-855-600-3453



Home test plan: Education

Therapeutics Update

[Information for Providers | NMDOH - Coronavirus Updates \(nmhealth.org\)](https://nmhealth.org/coronavirus/providers)

COVID-19 Therapeutic Options

Medication	Reduction in Hospitalization & Death	Route	Treatment Duration	Weekly Statewide Supply
Paxlovid	88%	Oral	5 days, Twice a Day	170 courses
<u>Remdesivir</u>	87%	Intravenous (IV)	3 days (1-2 hour infusions)	Currently not under allocation
Sotrovimab	85%	Intravenous (IV)	One day, 30 minutes	174 Courses
<u>Molnupiravir</u>	30%	Oral	5 days, Twice a Day	770 courses
Regeneron	0%	Intravenous (IV)	One day, 30 minutes	No longer in use
BAM/EDE	0%	Intravenous (IV)	One day, 30 minutes	No longer in use

Prescribing Oral Therapeutics

- **Must provide an *FDA Factsheet for Patients, parents, and caregivers* and document in EHR.**
- **Please include date of symptom onset and OMASS score on the prescription.**
 - It is critical the pharmacy has this information to ensure patient receives the medication within the treatment window.
- Check for any drug interactions. Due to a limited pharmacy network, the pharmacist may not have a full medication list and will rely on the patient's self-reported medications to check for drug interactions.

OMASS score

Oral Antiviral & Monoclonal Antibody Screening Score (OMAS)
adapted from Mayo Clinic's published Monoclonal Antibody Screening Score (MASS)

RISK FACTOR	POINTS
Age 65 years and older	2
BMI 35 kg/m2 and higher	2
Diabetes mellitus	2
Chronic kidney disease	3
Cardiovascular disease in a patient 55 years and older	2
Chronic respiratory disease in a patient 55 years and older	3
Hypertension in a patient 55 years and older	1
Immunosuppressed and unlikely to have responded to vaccines (eg: CD20 inhibitors, BTK inhibitors, campath, recent CAR-T, organ transplant)	3
Pregnancy*	4
BIPOC (Black, Indigenous, People of Color) status	1

* Molnupiravir is not recommended for use in pregnancy.

<https://cv.nmhealth.org/providers/covid-19-oral-treatments-for-providers/>

Investing for tomorrow, delivering today.

Participating Pharmacies

- Due to very limited supply, there will be one pharmacy partner initially, Walgreens.
- Patients will have their prescriptions overnighted to their home. A few locations in the state will have in-store inventory available for same-day pick up.
- For a current list of participating pharmacies, check <https://cv.nmhealth.org/providers/covid-19-oral-therapeutics-information-for-providers/>

Prescriptions should be sent to:

Community, A Walgreens Pharmacy
933 San Mateo Blvd NE Suite 501,
Albuquerque, NM 87108

Monday thru Friday from 8:30am to 5:pm

(Weekend Prescriptions Friday 4pm thru Monday 8am need to be sent to a location with store supplies. Please see the table below.)

Phone: 505-313-8080

Fax: 505-313-8082

Prescriptions will be sent via overnight mail across the state directly to the patient's home or an approved alternate pick up location.

Prescribers should note the date of symptom onset on the prescription. This information is critical for pharmacists to ensure the patient receives their prescription within the treatment window.

***** If you are picking up a prescription, please use drive thru to protect pharmacy staff. *****

Initial locations with In-store supplies of Paxlovid:

Name	Address	Paxlovid	Contact Info
WALGREENS 6587	9700 MENAUL BLVD NE, ALBUQUERQUE, NM 87112	In Stock	P: (505) 299 - 9541
Community, A Walgreens Pharmacy (#16544)	933 SAN MATEO BLVD NE, SUITE 501, ALBUQUERQUE, NM 87108	In Stock	P: (505) 313 - 8080
WALGREENS 4510	4221 E MAIN ST, FARMINGTON, NM 87402	In Stock	P: (505) 325 - 1749
WALGREENS 11458	3990 E LOHMAN AVE, LAS CRUCES, NM 88011	Out Of Stock	P: (575) 522 - 1457

Initial locations with In-store supplies of Molnupiravir:

Name	Address	Molnupiravir	Contact Info
WALGREENS 6587	9700 MENAUL BLVD NE, ALBUQUERQUE, NM 87112	In Stock	P: (505) 299 - 9541
Community, A Walgreens Pharmacy (#16544)	933 SAN MATEO BLVD NE, SUITE 501, ALBUQUERQUE, NM 87108	In Stock	P: (505) 313 - 8080

<https://cv.nmhealth.org/providers/covid-19-oral-therapeutics-information-for-providers/>

Billing

- The medication is paid for by the federal government.
- The pharmacy will bill the dispensing fees to patient's insurance. However, patients who are uninsured will not be turned away.
- Uninsured and underinsured patients may have their fees billed through the HRSA COVID-19 Cares Program or the HRSA COVID-19 Coverage Assistance Fund. For more information, please visit hrsa.gov/coviduninsuredclaim



Denver, CO

Vaccine Questic
covid.vaccines@state.nm.us

Therapeutics Questions:
COVID.Therapeutics@state.nm.us

THANK YOU!